

MAYLINE

Table of Contents



Introduction 4



Workspaces 6



Tables 12



Seating 18



Technology Furniture 24



High Density Storage 26



Mailroom Furniture 29



**Desks, Storage &
Conference 30**



Drafting Furniture 38

Find Your Fit. Gone are the days when a single all-purpose workstation met every worker's needs. Now it's about finding the perfect fit between what people do and how they do it. Mayline supports the individualization of the workplace with a broad range of furniture that accommodates different work practices, social needs and technology demands.

Today's most productive workplaces operate at the intersection of expression and environment – connecting work to place in ways that boost employee morale and performance. Mayline gives users more control over both style and space.

The Elements of Style

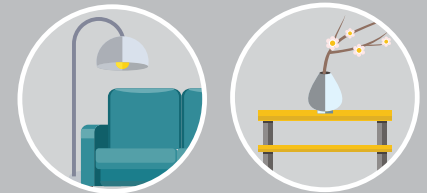
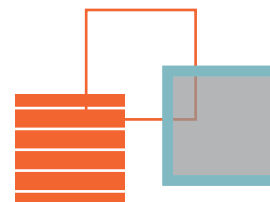
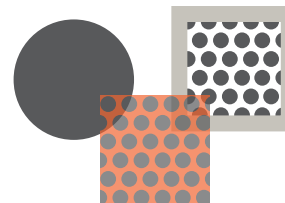
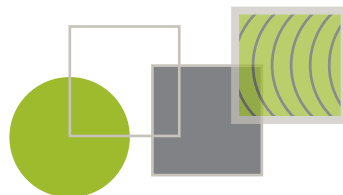
Work Style.

From different jobs to different generations, no two people work alike. The key is to engage with employees on how their workspaces can best support their needs and activities – and use Mayline furniture to maximize each individual's comfort and performance.



Design Style.

Workplace aesthetics help reinforce company culture – warm woods and soothing neutral colors reflect a much different character than futuristic laminates and bright primary hues. Mayline offers a broad range of surface materials and finishes to make our furniture embody your vision.



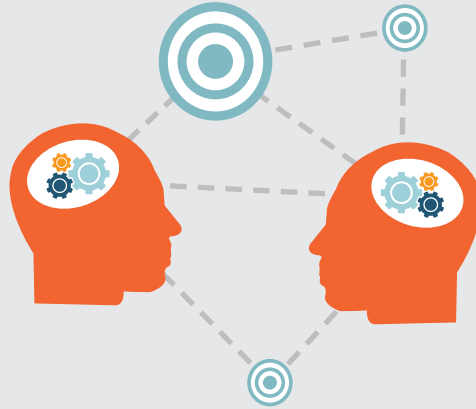
Personal Style.

Having some control over the workspace can improve personal comfort, productivity and satisfaction. Mayline makes it easy to give people a degree of control over such things as privacy, personal storage and worksurface adjustability.

The Experience of Space

Interactive and Collaborative.

Today's spaces must be designed to encourage and facilitate collaboration. Mayline offers easy-to-implement furniture solutions that can bring workers together in both formal and informal settings.



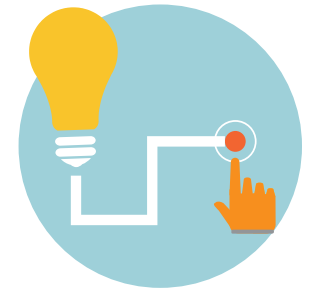
Specialized and Focused.

Some tasks will always require quieter spaces for more concentrated work. Mayline offers private-office furniture and job-specific workstations that minimize distractions – and blend effortlessly with collaborative spaces.



Flexible and Adaptable.

Spaces need to be designed for easy repurposing or reconfiguration as an organization and its technology change. Mayline furniture keeps pace with the evolution of the workplace, today and tomorrow.



Workspaces

Mayline workspace furniture breaks down the divisions between people and helps organizations promote collaborative problem solving.

How to customize collaborative spaces:

- 1 Use flexible furniture
- 2 Design spaces that support technology
- 3 Create an environment that reflects your brand identity

Work Design Magazine, 2015

e⁵™ Desking

Easy to specify, install, power, reconfigure and afford. Layered worksurface, storage and power/data solutions support varying levels of interaction, privacy and technology – all while making very efficient use of real estate. A broad range of modular components gives you the freedom to customize and re-customize any space.



Connections made simple.



Finishing Touches

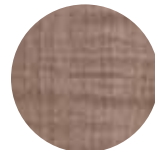
Six standard laminates and 900+ laminate options.



Designer White



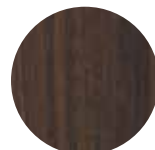
Summer Suede



Cocoa



Biltmore Cherry



Columbian Walnut



Raven



Multiple storage options provide a convenient place for every office essential.



Technology wall offers easy access to power for pads, pods and PDAs.





Select overhead storage cabinets can be equipped with tack panels or dry erase boards.



Freestanding technology wall brings power and data anywhere you want it.



Standing-height worksurfaces ease collaboration and promote healthy movement.



e5 makes even full-featured executive offices astonishingly affordable ... and smartly stylish.



Mix and match surface and storage components to create an endless variety of unique workstations.

TransAction™ Desking

Extensive technology support for media-intensive spaces. Create focus-friendly private workstations, team-nurturing open offices, space-saving benching applications and more – all with a single furniture system. TransAction is boldly contemporary in image and application yet grounded in classical ideas of simplicity and value.

One system does it all.



120-degree 3-pod workstations provide sizable work areas in a compressed footprint. Angled acrylic panels and power/data troughs help users control their interactions with people and technology.



Single-sided workstations can be equipped with a variety of components to create a professional, productive workplace that balances collaboration and privacy.

Dual-sided workstations with power/data troughs accommodate the latest technologies in a space-efficient manner. An ideal solution for drop-in workers who spend most of their time outside the office.



Keep™ Modular Wall Systems

Award-winning storage-wall system lets you build an astonishing variety of configurations using a limited number of components. Divides and defines space while enhancing privacy and productivity. Infinitely adjustable, incredibly adaptable and intuitively easy.

Keep things close,
keep space separate.



The Keep 120-degree wall system is perfect for small conference and collaborative media areas.



Mobile unit with cabinet, shelf and markerboard is easily transportable to meeting and training spaces.



Clean, contemporary lines complement any environment and blend well with other Mayline products.

Tables

Mayline tables bring people together in all sorts of environments, enhancing the way they interact, share, learn and perform.

50/50

is the emerging ratio for individual work in private offices vs. open/shared community spaces. The ratio in a traditional office is 70/30.

Work Design Magazine/IFMA Workplace Evolutionaries Webinar, 2014

Cohere™ Tables

Multiple shapes, sizes and functionalities accommodate all the ways people meet and collaborate, from private rooms to public spaces. The clean, understated design delivers a unified aesthetic throughout your operation.

Endlessly
adaptable.





Shared foot design unifies table aesthetic throughout the office.



Different tables offer different base options.

Simple lines and unobtrusive details blend seamlessly with other Mayline products, including e5.



Dining-height and bar-height hospitality tables support socializing and collaboration, in cafeterias and other public spaces.



Flip & Nest tables with locking casters are ideal for frequently reconfigured learning environments.

Sync™ Tables

Flared legs and perforated modesty panels infuse a modern aesthetic into any space. Locking casters allow quick layout changes while ensuring stability. A single-handed control mechanism allows one person to easily flip table tops for compact, straight-row nesting. Easy-to-use ganging kits keep rows looking neat.

Syncing style and function.



Tables nest in a straight row for compact storage.



Integrated modesty panel with built-in cable trough manages power.

Flip-N-Go® Tables

Quick and easy setup, reconfiguration and storage make these tables a perfect match for today's flexible workplace. Tops flip easily via dual-sided levers. Optional cutouts on select tables accommodate daisy-chain electrical kits. Transition tables, pie connectors and ganging kits add even more versatility.

Easy does it.



Tables tilt and lock for compact, straight-line nesting when not in use.



Turn any space into a learning/ collaboration environment – just roll tables where you want them and lock the casters.

Height-Adjustable Tables

Easy-to-adjust tables encourage users to vary their positions throughout the day, minimizing the harmful effects of prolonged sitting. Mayline has been building height-adjustable tables for more than a quarter century, giving users greater control over their workspaces and promoting a healthier, more efficient workforce.

For the health of it.



Multiple table lines satisfy different budgets, sizes, weight capacities and functional preferences.



Tables move up and down electronically, not manually, for effortless adjustment.

TransAction™ Tables

Sleek, modern design and cutting-edge technology support put multimedia capability at your fingertips. Three table shapes in lengths up to 24' fit a broad spectrum of conferencing and collaboration spaces. Tables match TransAction™ desking furniture for visual continuity across your office landscape.

Finessed to impress.



Powered-up media tables can be scaled to fit small offices and large conference rooms.



Optional technology well with power/data package is installed under a floating acrylic cover for easy access and a finished look.



Seating

Mayline seating is designed to boost individual comfort and productivity across a broad spectrum of settings, tasks and body types.

1:1

Many companies are increasingly adopting the best planning practice of providing a 1:1 ratio (or close to it) of desk seats to seats in shared settings used for either collaborative work or quiet work.

Harvard Business Review, 2015

Gist™ Chairs

Contemporary looks, easy ergonomics, and outstanding value. Multi-purpose, task, and task plus+ models cover the gamut of active seating, with multiple customizable adjustments that meet ANSI/BIFMA performance requirements. Gist offers just the right fit for every user.



Adjustable lumbar feature supports lower back and promotes proper sitting posture.



All models offer soft-comfort arm pads and upholstered seats with silver/black mesh backs.

Commute™ Task Chairs

Simple to specify and simple to use, with easy, intuitive fingertip adjustments. Seat slider on task and executive chairs provides a custom sit for users small to tall. Multi-purpose chairs extend the distinctive silhouette and durable comfort into meeting areas and open spaces.



Simple to specify,
easy to use.



Multi-purpose chair with mesh back and no arms.



Multi-purpose chair with mesh back and loop arms.



Task chair with mesh back and height-adjustable t-arms.



Fully upholstered executive chair with height-adjustable t-arms.

Valoré® Training Chairs

Versatile value. Valoré shines in training rooms, offices, collaborative spaces and even hospitality settings. Lightweight and comfortable, with a flex back that eases long hours of work. Breathable mesh and padded upholstery combinations ensure a soft, supportive sit.



Train without strain.



High-back chair with black mesh back and upholstered seat.



Height-adjustable task chair with integrated arms and 5-star aluminum base.



Seats flip up for compact nesting storage.



Mid-back chair with mesh back and chrome finish.

Thesis™ Training Chairs

Ideal for meeting, conference, classroom and training spaces.
Optional writing surface automatically moves into storage position
as users stand. Seats flip up for nesting/stacking storage.



Flex-back option offers a gentle recline and contoured lumbar support.



Armless and flip-arm options add flexibility.

Mercado™ Wood Guest Chairs

Contemporary style, old-fashioned comfort. Genuine leather and solid wood deliver a warm welcome to guests in private offices and reception areas.



Black leather is standard on all seated surfaces.



Select models are available with cream leather upholstery.



Chairs may also be upholstered in your choice of 150+ Momentum fabrics.



Multiple back options suit different aesthetic visions.

Hospitality/Breakroom Collection

Built to withstand the rigors of high-traffic environments while maximizing comfort and style. Two distinct seating lines deliver a clear aesthetic choice. Chairs and stools are perfectly sized for use with Mayline's bar- and dining-height tables, which are offered with stainless steel or cast iron bases.

Tough to beat,
easy to love.



Valoré™ chairs and stools feature a black fabric seat and multiple mesh back options. Chairs stack up to four high.



Escalate stools and chairs have black or white plastic or mesh back options plus your choice of plastic or upholstered seats. Both stools and chairs stack for storage.

Vary chair and table heights to create a relaxed, informal setting.

Living Chair

Living is the chair that moves with you. A weight-activated seat slider and flexible elastomer back provide passive ergonomic support – no need for manual adjustments.



Three color combinations complement a hip, modern look that refreshes any office setting.



Back automatically adapts to your shape and adjusts to your movements for exceptional all-day comfort.

Lounge & Reception Furniture

Plush comfort and welcoming aesthetics – ideal for reception areas and casual meeting spaces, to accommodate soothing quiet times or spark invigorating collaborations.



Prestige sofas, chairs and settees create inviting public spaces. All lounge furniture features solid hardwoods and genuine leather upholstery.



The Santa Cruz collection includes a generously proportioned mobile lounge chair with or without a tablet.

Technology Furniture

Rapidly evolving technologies require easily adaptable technology furniture. Mayline provides solutions that grow with you.

1 in 4

U.S. workers are in optimal workplace environments. The rest are struggling to work effectively.

Gensler 2013 U.S. Workplace Survey

Techworks®

Benches, organizer frames and accessories can be configured in any number of ways to support different tasks, teams and work styles. Exceptional durability and flexibility is ideal for telecommunication, computer diagnostic, laboratory, forensics, engineering, education and high-end mechanic, general work bench and even residential hobbyist applications.



High Tech, Low Hassle.



Benches can be installed at heights from 26" to 38".



Frames offer horizontal and vertical cable management.



Install and reconfigure storage options in 1" increments.



Position air, gas and vacuum disconnect fixtures on service bars.



High-Density Storage

Mayline lets you store more in less space, with smart storage solutions that keep things neat, organized and readily accessible.

50%

Space-savings with mobile files.

Mobile 1000™

Putting storage components on a sliding track eliminates fixed aisles to deliver more storage capacity in a smaller footprint. A wide range of space-saving, time-saving, money-saving options maximize your return on investment. End panels may be enhanced with laminate, vinyl and magnetic-backed fabric options.



Optional incline ramp helps meet ADA requirements.



Red /green indicators let users know when it's safe to turn the handle and start rolling.

Mobile Lite

The more affordable cousin to Mobile 1000™ installs in half the time of larger, heavier-duty systems. Shelves accommodate end-tabbed files, boxes and other supplies. Options include pull-out reference shelves, waist-high locks and locking security shades for individual units or ranges.

Make the move
for less.



Waist-high handle with range lock fixes aisle in place while user retrieves items.



Aluminum carriages support up to 1,000 lbs. per linear foot.



ARC™ Rotary Files

Double-faced, cantilever-style shelving units rotate with a gentle push or pull to provide access from both sides. Easily expandable, in 3-8 tier heights.



On optional pull-out reference shelves.

File Harbor Cabinets

A space-effective alternative to lateral files. Distinctive tambour doors recede horizontally into the cabinet to keep aisles clear.



With optional roll-out drawers and file frames.

4-Post Shelving

The most efficient, economical storage solution allows greater visibility and easy retrieval of end-tab filing, boxes, archives and more.



With optional drawers in three heights.

Mailroom Furniture

Mayline mailroom furniture is uniquely designed to optimize mail-flow efficiency while maximizing budget dollars.

1.5x

Messy workspaces undermine persistence. Researchers found that subjects in a neat environment stick with a task more than 1.5 times as long as those in a messy workspace.

Harvard Business Review, 2015

Mailflow Systems®

America's leading mailflow solution for decades. Comprehensive line of sorters, tables, cabinets, carts and more satisfies the needs of corporate mail-processing operations large and small. Endless product, size and configuration options let you personalize your approach while optimizing mailflow efficiencies and maximizing your budget.



Sorting shelves are available in multiple depths and widths for any application.



Shelves have a centered thumb cut for quick-handed retrieval of mail – one of countless efficiency features.

Desks, Storage & Conference

Mayline offers a variety of more traditional office and meeting solutions to satisfy the enduring need for focused spaces.

“The way we design our spaces can help us or hinder us, inspire new ideas or stifle them, make it easier to work together or set us apart.”

*Bill Moggridge,
Director of the Smithsonian's
Cooper-Hewitt National Design Museum*

Sterling Laminite Series

Bold, contemporary design and rich, textured finishes set Sterling apart. Chrome standoffs, acrylic accents and hand-crafted 1⁵/₈"-thick worksurfaces add further distinction. Office, conference and reception pieces coordinate beautifully to create a consistent culture of achievement.

The image
of success.



Textured Driftwood



Textured Brown Sugar



Textured Mocha



Opaque acrylic doors and modesty panels create a fashion-forward look – in the office and the conference room.

Medina™ Laminate Series

Modern look, modest price. Clean lines, curved shapes and floating worksurfaces reflect Italian design influences. A smart array of components allows a broad range of workplace configurations. Exceptionally durable yet surprisingly economical.



Create a full-featured office with hutches, cabinets and other storage components.



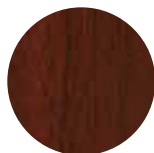
Textured Sea Salt



Textured Brown Sugar



Gray Steel



Mahogany



Mocha



Hutches can be mounted on walls or set atop worksurface corner supports.



Curved desktop extensions have the same 1" beveled edge as all worksurfaces.

Aberdeen™ Laminate Series

Equally at home in private offices and open-plan team spaces, with a transitional style that suits most any office aesthetic. Textured glass and brushed nickel accents enhance the upscale appeal, while technology-supportive features boost functionality. Matching reception stations and conference furniture available.

Enhance your
corporate culture.



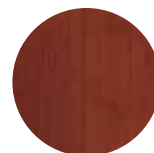
Multiple worksurface choices allow an endless variety of configurations.



Horizontal surfaces feature a fluted PVC edge for durability and distinction.



Maple



Cherry



Mocha



Gray Steel

Brighton™ Laminate Series

Mayline's most affordable caseworks line offers limitless possibilities – from the private office and team space to the conference room and reception area. Subtle arches and radiuses coordinate nicely with the higher-end Aberdeen™ series, allowing you to specify both for different levels of an organization.

High performance,
low price.



Create a full-featured meeting or collaboration space on a minimal budget.



The "Brighton curve" is evident throughout the collection.



Cherry



Mocha

Corsica® Veneer Series

Enjoy a level of quality and refinement typically reserved for much more expensive wood furniture. At home in both traditional and contemporary settings, in private offices and team spaces, in conference rooms and reception areas. Includes a wide variety of storage options and conference solutions.

Affordable luxury.



Tables range from 30' long to 42" round to fit any space and purpose.



Choose wood or glass doors on storage cabinets.



Sierra Cherry on
Cherry Veneer



Mahogany
on Walnut Veneer

Napoli® Veneer Series

Clean lines, “floating” desks, and a generous use of glass and metal reflect a modern European aesthetic. Hand-crafted with AA-grade North American hardwood veneers for warmth and durability. Multiple desking and storage options support any user, from CEO to receptionist.

Contemporary style,
enduring quality.



Tables, power modules and buffet cabinets create an elegant conference room.



Wood, glass and metal merge into a beautiful yet affordable package.



Sierra Cherry



Golden Cherry



Mahogany

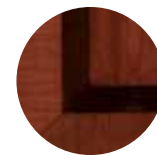
Sorrento Veneer Series

Luxurious wood veneers, frosted glass doors, technology access panels and a variety of storage options make it ideal for the executive office. An affordable price tag makes it perfect for small offices, conference rooms and reception areas. Coordinating conference tables and presentation accessories are available.

High-end look,
high-tech support.



Perfectly matched wood veneers deliver a premium appearance.



Bourbon Cherry with
Bird-eye Maple Inlays



Espresso
on Walnut Veneer

Luminary Veneer Series

Modular, non-handed desking components maximize flexibility, while a variety of creative storage options ensure just the right configuration for every user. Streamlined look complements any décor.



Worksurfaces have a 1¼"-thick reeded edge, a Luminary hallmark.



Cherry
on Cherry Veneer



Maple
on Maple Veneer

Mira Veneer Series

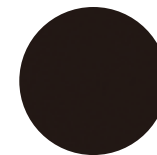
Transitional design is suitable for any environment and maximizes desking, conference and reception flexibility. Refined appearance masks a rugged construction that will stand up to years of heavy use.



Cleverly engineered table bases enhance technology integration.



Medium Cherry
on Cherry Veneer



Espresso
on Walnut Veneer

Drafting Furniture

Mayline's original flagship product set the standard more than 70 years ago – and it continues to lead the industry today.

“Engaged, productive employees don't work in a vacuum. They need diverse workspaces that help them bring out the best in themselves, where energy and inspiration can flow freely.”

Fast Company, 2015

Drafting Tables & Plan Files

Four-post tables, electrical tables, light tables, team tables, straightedges, files and accessories are available to fit every task and budget. Superior strength and stability and is built in to every product to deliver long-lasting performance.



Built to tilt.



Range of Motion. Four-post Ranger® table with tool drawer tilts up to 50°.



Meeting Central. Team tables accommodate project meetings and project storage.



From our beginning in 1939 as the Engineering Supply Company to our current position as one of America's leading mid-market contract furniture manufacturers, customers have depended on us for practical, versatile, affordable solutions.



Many products are designed and manufactured in the United States.



Our track record for innovation, quality and reliability combines with a commitment to complete and on-time delivery to ensure you get the most from your furniture investment.



The majority of our products ship within 72 hours.



Select products can be delivered to you in 1-4 days – at no extra cost.



Mayline products are independently tested for indoor air quality under the Intertek Green Leaf certification program.

The Mayline Advantage. We offer a complete range of office furniture solutions – including custom filing and storage solutions – to provide personalized solutions to unique customer needs. Every solution delivers exceptional style and functionality at a mid-market price point. As the workplace continues to evolve, we continue to innovate new products that will help you work smarter. Browse our products and services at www.mayline.com





www.mayline.com

800-822-8037

CORPORATE LOCATION

MAYLINE

619 N. COMMERCE STREET
PO BOX 728
SHEBOYGAN, WI 53082-0728

CUSTOMER SERVICE 800-822-8037

920-457-7388 (FAX)

customerservice@mayline.com

TO PLACE ORDERS:

MAYLINE

ATTN: ORDER DESK

PO BOX 728
SHEBOYGAN, WI 53082-0728
800-822-8037

920-457-7388 (FAX)

orderdesk@mayline.com

DISTRIBUTION CENTER

ARKANSAS

824 NORTH PALM STREET
NORTH LITTLE ROCK, AR
800-480-3123

SHOWROOM LOCATIONS

ATLANTA

2030 POWERS FERRY RD., SUITE 230
ATLANTA, GA 30339
770-984-9047

BOSTON

850 SUMMER STREET
BOSTON, MA 02127
617-269-7600

CHICAGO

MERCHANDISE MART, SUITE 1147
CHICAGO, IL 60654
847-952-1213

CINCINNATI

2226 GILBERT AVENUE
CINCINNATI, OH 45206
513-221-4800

DALLAS

1109 QUAKER STREET
DALLAS, TX 75207
817-715-2941

DENVER

WELLS FARGO BUILDING
333 S. BANNOCK ST., SUITE 310
ENGLEWOOD, CO 80110
720-635-7893

DETROIT

2384 FRANKLIN ROAD
BLOOMFIELD HILLS, MI 48302
248-745-9990

HOUSTON

1213 WEST LOOP NORTH #160
HOUSTON, TX 77055
281-829-1432

LOS ANGELES

12015 MORA DR., UNIT 1
SANTE FE SPRINGS, CA 90670
562-903-7090

NEW JERSEY

HOBOKEN BUSINESS CENTER
50 HARRISON STREET, SUITE 113
HOBOKEN, NJ 07030
212-684-7788

NORTHERN CALIFORNIA

2528 QUIME DR., SUITE 6
SAN JOSE, CA 95131
925-786-0178

PORTLAND

5331 SW MACADAM AVE, SUITE 375
PORTLAND, OR 97239
503-222-2364

SEATTLE

829 S. FIDALGO
SEATTLE, WA 98108
206-767-0412

VANCOUVER

110-4611 #6 ROAD
RICHMOND, BC
CANADA
604-272-4401

WASHINGTON D.C.

9000 VIRGINIA MANOR ROAD
SUITE 210
BELTSVILLE, MD 20705
301-408-0600