



Spaces
Design-Build Collection

DARRAN

Spaces

Spaces is a modern collection in the Design-Build Series featuring elevated cabinets and surfaces with clean line simplicity and metallic sharpness. The aluminum detailing, pulls and feet contrast with the rich wood finishes for a stylish mix of materials.





Spaces

Glass table tops, aluminum sleigh bases, touch latch doors and open storage streamline office interiors into a sleek modern statement.



Finish: Koko Cherry | Pull: N/A - Touch Latch Doors | Edge: Standard Undercut Bevel



Finish: Scotch Cherry | Pull: PL-210 Anodized Aluminum | Edge: Standard Undercut Bevel



Finish: Blush Oak | Pull: PL-210 Anodized Aluminum | Edge: Standard Undercut Bevel



Spaces

Configurations are customized by adding or subtracting a variety of options. Wood utility shelves with integrated tasking add function while removing the legs further simplifies the Spaces aesthetic.





Finish: Light Walnut | Pull: PL-210 Anodized Aluminum | Edge: Standard Undercut Bevel | Option: Delete Legs



Sliding Glass Doors With White Glass In Aluminum Accent Frame.



Optional Wood Modesty Replaces Aluminum Rail.



Sliding Door Mechanism With Concealed Track.



Organizer Pedestal With Accessories.



Hanging File Folder Option For All Door Storage.

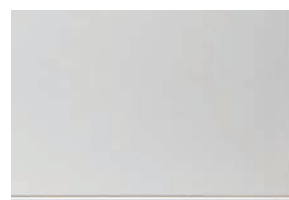


3" Anodized Aluminum Legs With Gray Levelers. Delete At No Charge.

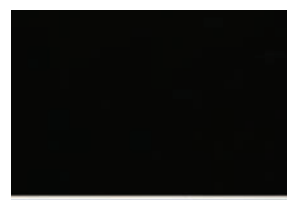
FRAME OPTIONS



Mini Frame With Frosted Glass



Accent Frame With White Glass



Accent Frame With Black Glass

EDGE PROFILE



Undercut Bevel Edge Rests On Aluminum Accent

PAINT OPTION (Premium - Contact Factory)



Clean Sheets

MAPLE FINISHES (Standard)



Clear Maple



Wheat Maple

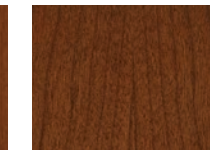
CHERRY FINISHES ON CHERRY VENEER (Standard)



Tuscan Cherry



Clear Cherry



Natural Cherry



Scotch Cherry



Medium Cherry



Koko Cherry

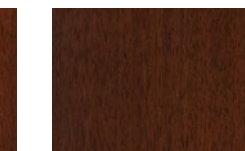
WALNUT FINISHES ON WALNUT VENEER (Standard)



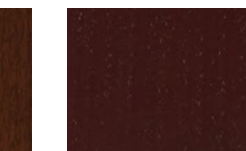
Light Walnut



Judicial Walnut



Natural Walnut



Executive Walnut



Senate Walnut

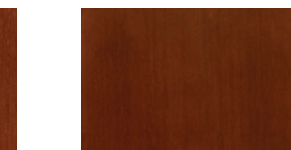
MOABI FINISHES ON MOABI VENEER (Premium)



Clear Moabi



Natural Moabi



Scotch Moabi



Medium Moabi

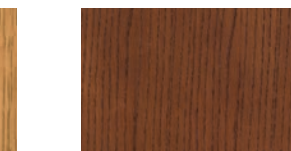
OAK FINISHES ON OAK VENEER (Premium)



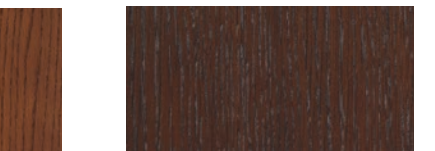
Blush Oak



Wheat Oak



Toast Oak



Mocha Oak

PULLS & KNOBS (nonstandard pulls available by quote)



PL-210 Standard Pull



PL-250 Standard Pull



PL-200 Square



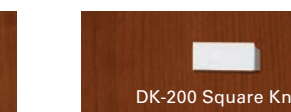
PL-202 Round



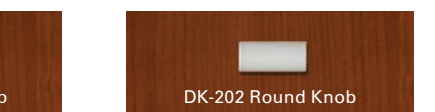
PL-201 Square Handle



PL-203 Round Handle



DK-200 Square Knob



DK-202 Round Knob

Most finishes offer a coordinating laminate top. Consult price list for availability. Due to limitations in the printing process, finishes shown here may not match actual finishes exactly. See actual samples for accurate representations. Due to natural color variations in the grain and color of wood, there may be slight variations in color from one piece to another. Exposure to light and the aging process may also cause darkening of natural wood products. Due to these factors, DARRAN does not guarantee exact matches from item to item. Note: When ordering a light to clear finish, the natural characteristics and variations in the grain of the wood will be more apparent. When ordering a dark or medium finish the natural characteristics and variations in the grain of the wood will be more subdued providing a more uniform appearance. All colors shown in native wood species. Colors on different species, or custom color matches are available at additional costs.



Spaces Installation Snapshot

DARRAN's Spaces Collection offered the modern appearance, design flexibility and quality level that was a perfect fit for the GXS Global Headquarters in Gaithersburg, MD. The Natural Walnut finish enhances the Spaces aluminum accents for a striking, yet sophisticated statement.

Spaces

Design-Build Collection



Central Park casegoods are BIFMA LEVEL 1 Certified.
Learn more about DARRAN's environmental initiatives at www.darran.com.

DARRAN

DARRAN Furniture Industries
2402 Shore Street
High Point, NC 27263
800.334.7891
www.darran.com
Certified WBENC Women's Business Enterprise